

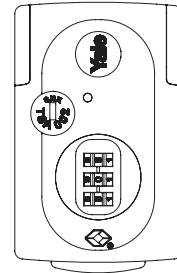
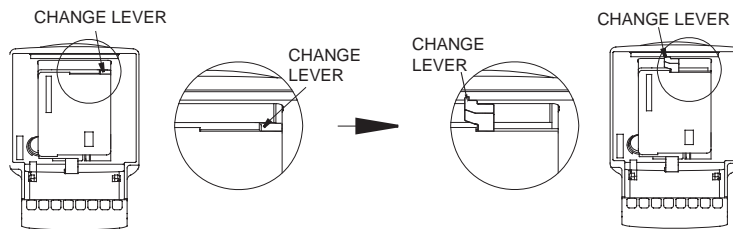


OPERATING INSTRUCTIONS

This lock is preset to open at 0-0-0. How to reset a new combination

Step1 Push in the Release Button and pull the lock lower case Cover upward.

Step2 Push the Change Lever upward.



Step3 Set the dials to a new combination.

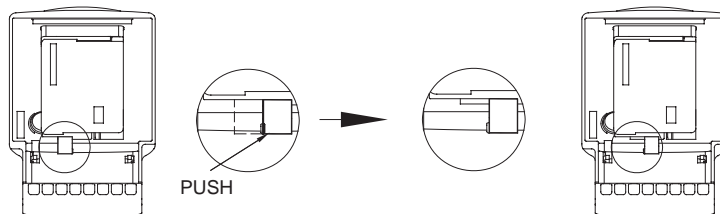
Step4 Push the Change Lever downward back to its original (normal) position.

Make sure you have completed this action before closing the case and using the lock.

Now you have successfully changed the code to your new combination.

Green / Red Indicator

1. The indicator will turn red if U.S. Customs screeners open the lock.
2. To return the indicator to GREEN, push the button from the left side to the right side as indicated below.



NOTE:



The Transportation Security Administration (TSA) screeners and airline check-in staff at airports are trained to recognize the Travel Sentry® logo.

They understand that baggage with locks displaying this mark are permitted to remain locked.

TSA screeners have access to special codes that allow them to open those locks in the event that the baggage must be opened for inspection.

With Travel Sentry® Approved locks the TSA can screen checked baggage faster, without having to break open locks.