

# Universal locking lever cylinder - System MK5 2103

21 mm diameter, laterally flattened to 17.6 mm

## Product description

- 5 pin tumblers
- Brass cylinder
- Standard finish, satin nickel-plated (OF=MV)
- Drilling protection class 1 (AB=1) standard
- Standard with enclosed but not fixed locking lever (AUS=10X7-M8 LOSE)
- Locking path and locking lever path 90° left or right
- Key withdrawal when locking lever is closed
- Locking lever can be adjusted to 90° or 180°, depending on version
- Fixing with housing nut M21 x 0.75
- Other lever mating dimensions, e.g. AUS=7x7-M8, to permit the use of other locking lever variations
- Standard locking lever (SLHB=2645014)
- Key with round metal head
- Available for type H locking systems (AA=H)
- Available for individual locking with standard locking (AA=NML), without security card
- Available for individual lockings in profile KSP1 with registered and restricted locking (AA=SP) and security card

## Scope of delivery

- 1 locking lever cylinder
- 2 small nickel silver keys
- 1 locking lever (1905,SLHB=2645014) enclosed but not fixed (AUS=10X7-M8 LOSE) or 1 locking lever fixed (AUS=10X7-M8 MONT)
- 1 housing nut M21 x 0.75
- 1 core nut M8 x 0.75
- 1 toothed lock washer, J8.2, DIN 6797

## Note

- Can only be combined with MK5 system cylinders

## Ordering Information

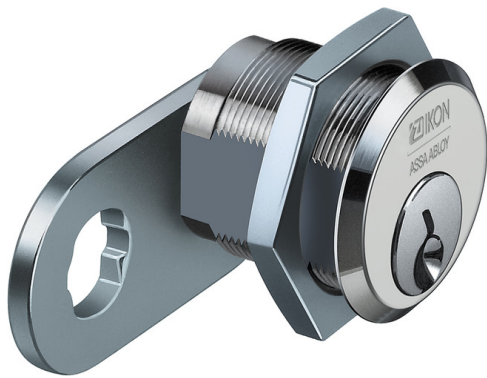
- Please include the desired locking path (SST=) in your order.

## Suitable ASSA ABLOY products

- Maintenance spray 8511
- Escutcheon with rain protection cover 1254,AUS=2-7

## Variants that can be ordered

Article number	AA=	PR=
2103	NML	K6
	SP	KSP1
	H	K6



range of distance max. 13

