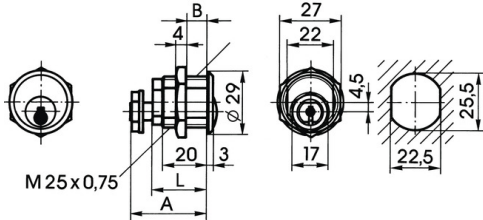
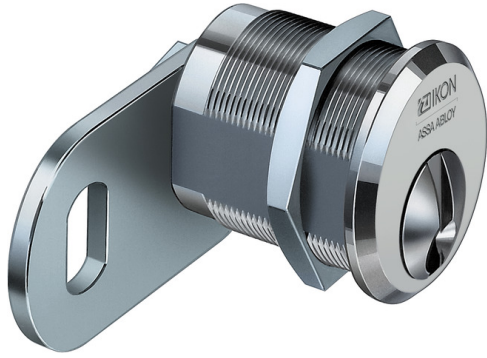


Locking lever cylinder .923 / ..43

25 mm diameter, laterally flattened to 22 mm



Overview of Advantages

- The locking direction of the locking lever can be given when ordering; the locking direction can however be easily changed by changing the position of the stop screw

Product description

- Brass cylinder matt chrome-plated
- Standard finish, matt chrome-plated (OF=MC)
- Further finishes satin nickel plated (MV), or on request
- Number of pin tumblers dependent on system
- Drilling protection (AB=), locking wave (SW=), additional lateral scanning, security card depending on profile (PR=)
- Spherical / Tapered cylinder core head with reinforced key guide
- Core pins made of special wear-resistant bronze
- Locking path and locking lever path 90° left or right
- Key withdrawal when locking lever is closed
- Standard locking lever (SLHB=1645009)
- Suitable for material thicknesses up to 16 mm

Scope of delivery

- 1 locking lever cylinder
- 2 nickel silver keys
- 1 housing nut M25 x 0.75 x 4
- 1 core nut M10 x 0,75

Ordering Information

- The former BAB articles P043 and P643 are available as this type with the old article numbers
- Not available with drilling protection 2 (AB=2) or 3 (AB=3)
- Dimension A, L, B in mm dependent on system. The actual lengths can deviate by up to +0.8 mm
- Please include the desired locking path (SST=) in your order.

Suitable ASSA ABLOY products

- Maintenance spray 8511
- Escutcheon with rain protection cover 1254,AUS=2-7