

Rack and pinion door closer with link arm

Rack and pinion door closer with link arm

Product description

- Rack and pinion door closer with link arm
- Certified in compliance with EN 1154, size 2/3/4
- For single action doors up to 1100 mm wide

Overview of Advantages

- Can be used for left and right-handed doors
- Suitable for fire and smoke protection doors
- Closing speed, latching speed and backcheck continuously adjustable using regulating valves
- Thermodynamic valves for consistent performance
- Closing force configurable
- Opening angle up to 180° (105° in mounting position EN size 4)
- Standard colours: silver EV1; white, similar to RAL9016; brown, similar to RAL8014; black, similar to RAL9005

Note

- Not for use on fire and smoke protection doors in Germany!

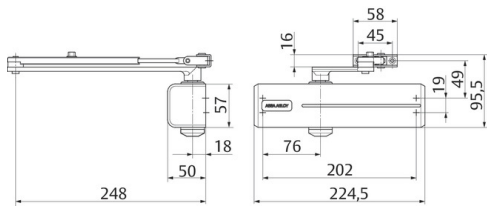
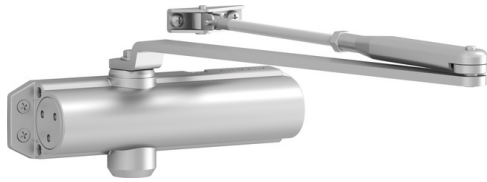
The advantages at a glance

Customer segment	Advantages
Project planners	Compact design Favourably priced, reliable closer model
Builders	Quick and easy installation Suitable for left and right handed doors Easy to adjust
Trade	Inexpensive closer model for standard doors All-inclusive package with door closer and link arm
User	Largely unaffected by temperature fluctuations because of thermodynamic valves Backcheck feature offers optimum protection for doors and walls

Technical data

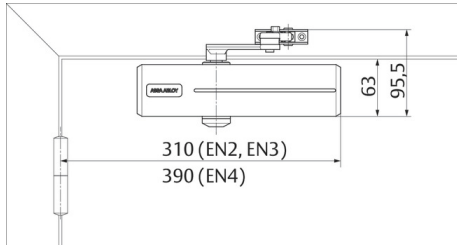
Closing force	EN 2/3/4
Door width up to	1100 mm
Suitable for fire doors	Yes
Handing	Left / right handed
Closing speed	Variable between 180°-15°
Latching speed	Variable between 15°-0°
Backcheck effect	Variable above 75°
Certified in compliance with	EN 1154
CE marking for building products	Yes
Length	220 mm
Height	52 mm
Depth	47 mm
Color	Brown, similar to RAL8014
Net_weight	1,6 kg

Article number	DC120-----8014
EAN-Number	4042203421950



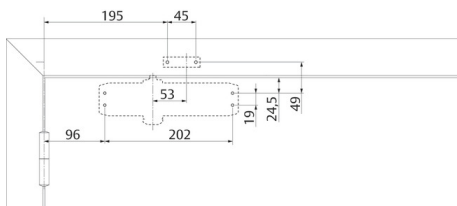
view construction

Required space on doors



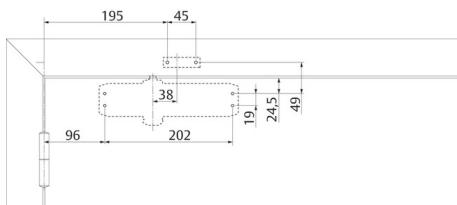
Left handed shown in diagram
Right handed is the reverse

Installation dimensions



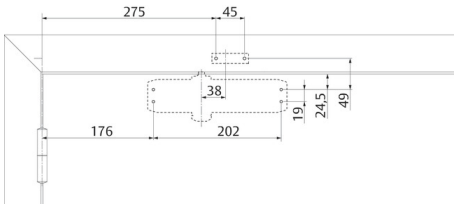
Installation dimensions EN2

Installation dimensions



Installation dimensions EN3

Installation dimensions



Installation dimensions EN4