

## Rack and pinion door closer with link arm

Rack and pinion door closer with link arm

## Product description

- Rack and pinion door closer with link arm
- Certified in compliance with EN 1154, size 2/3/4/5
- For single action doors up to 1250 mm wide

## Overview of Advantages

- Suitable for fire and smoke protection doors
- Can be used for left and right-handed doors
- Thermodynamic valves for consistent performance
- Closing speed, latching speed and backcheck adjustable via front facing regulating valves
- Closing force configurable
- Opening angle up to 180° (EN5 = 125°)
- Standard colours: silver EV1; white, similar to RAL9016; brown, similar to RAL8014; black, similar to RAL9005

## Note

- Not for use on fire and smoke protection doors in Germany!

## Accessories/Individual parts

- Mounting plate A161 For Guide Rail Model DC140, white, similar to RAL9016 DCA161-----9016
- Parallel arm bracket A154 White, similar to RAL9016 DCA154-----9016

## The advantages at a glance

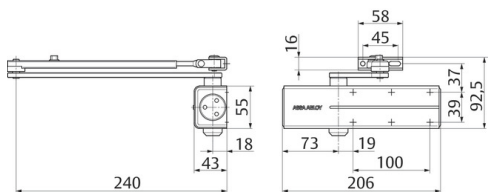
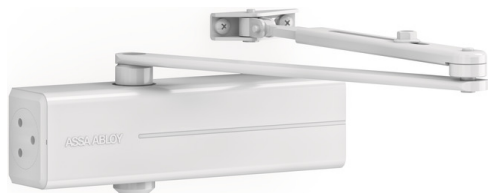
Customer segment	Advantages
Project planners	Compact design Modern design Favourably priced, reliable closer model
Builders	Quick and easy installation Can be used for left and right-handed doors Easy to adjust
Trade	Inexpensive closer model for standard doors All-inclusive package with door closer and link arm
User	Largely unaffected by temperature fluctuations because of thermodynamic valves Backcheck feature offers optimum protection for doors and walls

## Technical data

Door width up to	1250 mm
Closing force	EN 2/3/4/5
Suitable for fire doors	Yes
Handing	Left / right handed
Closing speed	Variable between 180°-15° / EN5 = 125°-15°
Latching speed	Variable between 15°-0°
Backcheck effect	Variable above 75°
Height	55 mm
Depth	43 mm
Length	206 mm
Certified in compliance with	EN 1154
CE marking for building products	Yes
Color	White, similar to RAL9016
Net_weight	1,75 kg

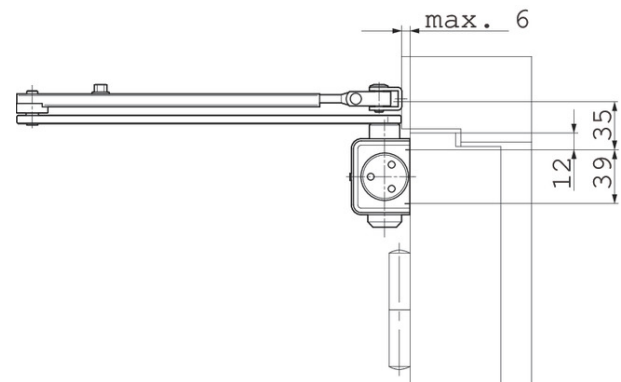
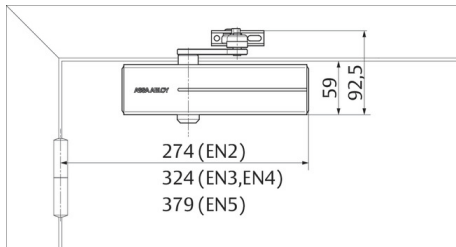
Article number DC140-----D9016

EAN-Number 4042203687011



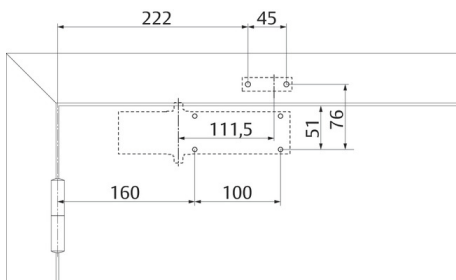
view construction

Required space on doors



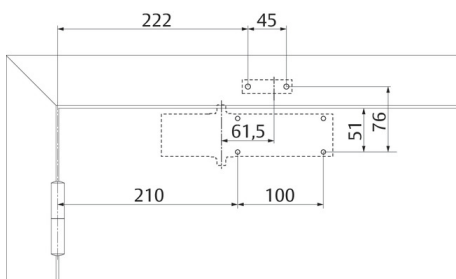
Left handed shown in diagram  
Right handed is the reverse

Installation dimensions



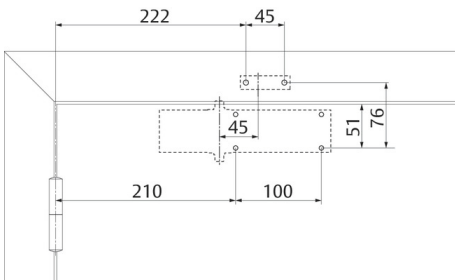
Installation dimensions EN2

Installation dimensions



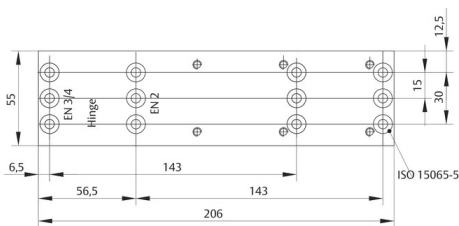
Installation dimensions EN3

## Installation dimensions

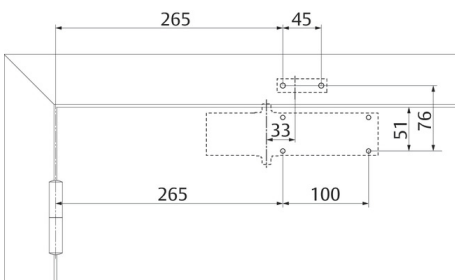


## Installation dimensions EN4

## Mounting Plate A161



## Installation dimensions



## Installation dimensions EN5