

Rack and pinion door closer with link arm

Rack and pinion door closer with link arm

Product description

- Rack and pinion door closer with link arm
- Certified in compliance with EN 1154, size 2/3/4/5
- For single action doors up to 1250 mm wide

Overview of Advantages

- Suitable for fire and smoke protection doors
- Can be used for left and right-handed doors
- Thermodynamic valves for consistent performance
- Closing speed, latching speed and backcheck adjustable via front facing regulating valves
- Closing force configurable
- Opening angle up to 180° (EN5 = 125°)
- Standard colours: silver EV1; white, similar to RAL9016; brown, similar to RAL8014; black, similar to RAL9005

Note

- Not for use on fire and smoke protection doors in Germany!

Accessories/Individual parts

- Mounting plate A161Brown, similar to RAL8014 DCA161-----8014
- Parallel arm bracket A154Brown, similar to RAL8014 DCA154-----8014

The advantages at a glance

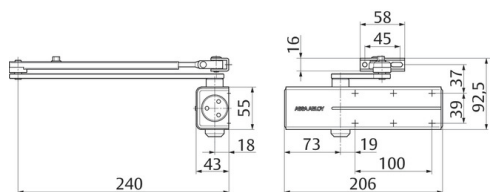
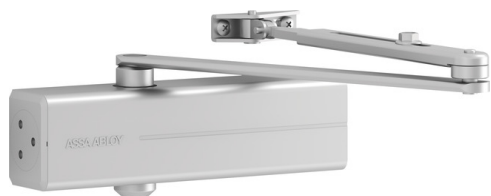
Customer segment	Advantages
Project planners	Compact design Modern design Favourably priced, reliable closer model
Builders	Quick and easy installation Can be used for left and right-handed doors Easy to adjust
Trade	Inexpensive closer model for standard doors All-inclusive package with door closer and link arm
User	Largely unaffected by temperature fluctuations because of thermodynamic valves Backcheck feature offers optimum protection for doors and walls

Technical data

Door width up to	1250 mm
Closing force	EN 2/3/4/5
Suitable for fire doors	Yes
Handing	Left / right handed
Closing speed	Variable between 180°-15° / EN5 = 125°-15°
Latching speed	Variable between 15°-0°
Backcheck effect	Variable above 75°
Height	55 mm
Depth	43 mm
Length	206 mm
Certified in compliance with	EN 1154
CE marking for building products	Yes
Color	Brown, similar to RAL8014
Net_weight	1,75 kg

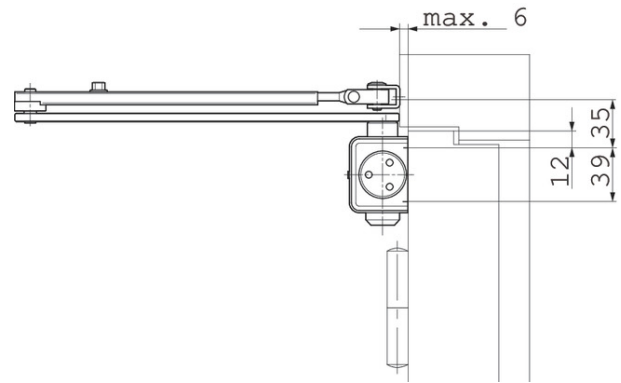
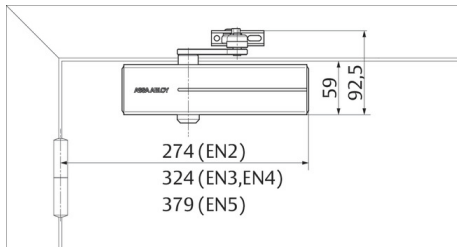
Article number DC140-----D8014

EAN-Number 4042203686991



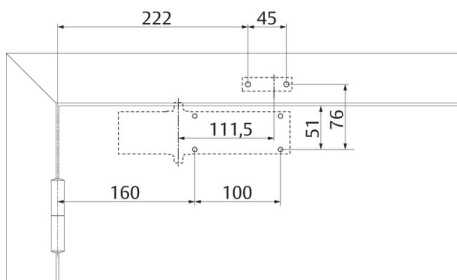
view construction

Required space on doors



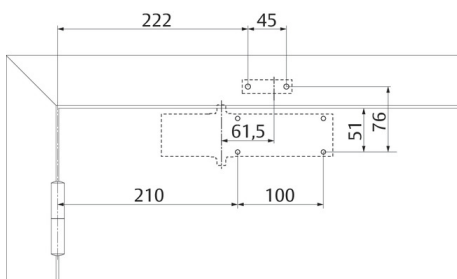
Left handed shown in diagram
Right handed is the reverse

Installation dimensions



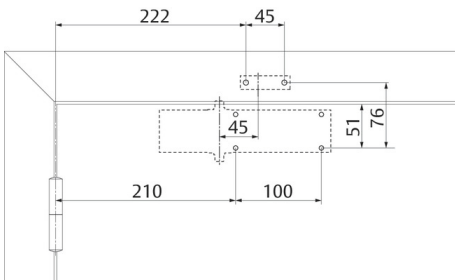
Installation dimensions EN2

Installation dimensions



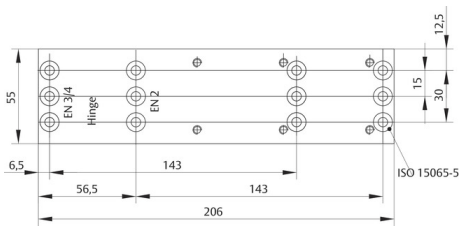
Installation dimensions EN3

Installation dimensions

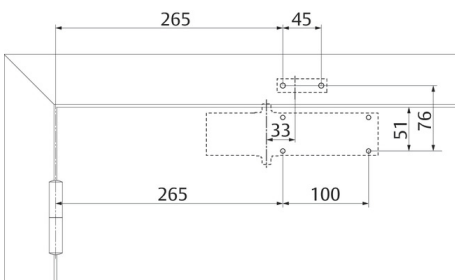


Installation dimensions EN4

Mounting Plate A161



Installation dimensions



Installation dimensions EN5