

Concealed door closer with Cam-Motion® technology and guide rail with integrated mechanical coordinator and two electro-mechanical hold-open devices for double leaf doors

Concealed door closer with Cam-Motion® technology and guide rail with integrated mechanical coordinator and two electro-mechanical hold-open devices

### Product description

- Concealed door closer with Cam-Motion® technology and guide rail with integrated mechanical coordinator and two electro-mechanical hold-open devices for double leaf doors
- Guide rail is certified in compliance with EN1155 and EN 1158, size 3-6
- Closer is certified in compliance with EN1154, size 1-5
- Fulfills barrier-free building requirements (EA / CEN TR 15894)
- Suitable for fire and smoke protection double leave doors, hinge distance 1350-2500 mm
- DIBt approval with different smoke detection systems

### Overview of Advantages

- Concealed guide rail with integrated electro-mechanical hold-open device on both sides and door coordinator based on wedge system
- Hold-open angle adjustable between 80° - 120°
- Continuously adjustable holding force
- Large range of applications
- Standard colours: silver EV1
- Customised finishes available on request

### Note

- Concealed guide rail G882 / G884
- Facts for door closer see DC860
- Additional verification of suitability required for the respective fire or smoke protection door

### Characteristics G882

- Concealed mechanical coordinator with two electro-mechanical hold-open devices for double leaf doors
- Possible to keep active leaf or both door leaves open

### Characteristics G884

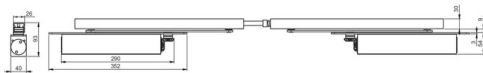
- Concealed mechanical coordinator with one electro-mechanical hold-open device for double leaf doors
- Possible to keep both door leaves open by using only one electro-mechanical hold-open device

### The advantages at a glance

Customer segment	Advantages
Project planners	Extensive range of uses: Fire and smoke protection doors as well as standard doors Fulfills barrier-free building requirements (EA / CEN TR 15894) Comprehensive functions, standard or optional Concealed door closer products prefers esthetic advantages for every solutions Fulfills barrier-free building requirements (EA / CEN TR 15894) Extensive range of uses: Fire and smoke protection doors as well as standard doors Compact design, small size Suitable for steel, wooden and aluminium profile doors
Builders	Quick and easy installation Quickly and easily adjustable Suitable for left and right handed doors Quick and easy installation Quickly and easily adjustable
Trade	Reduced inventory costs due to modular product range One single product suitable for a large variety of mounting positions Reduced inventory costs due to modular product range One single product suitable for a large variety of mounting positions
User	Easier door opening and improved accessibility due to rapidly decreasing torque Largely unaffected by temperature fluctuations because of thermodynamic valves Correct closing sequence guaranteed in every situation Adjustable operating force, to meet door construction requirements and user need

### Technical data

Hold-open angle of inactive leaf (hinge side / non-hinge side)	70° - 120°
--	------------



# DC860 with G882 / G884

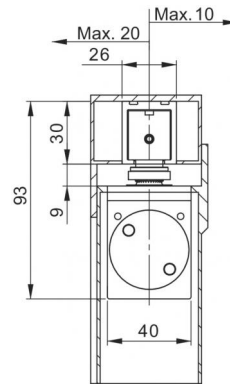
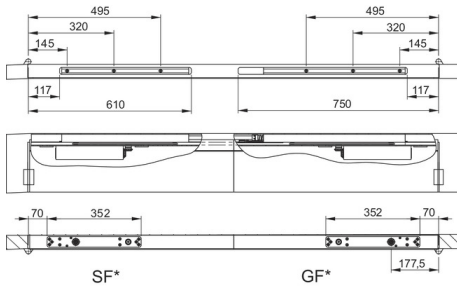
Concealed door closer with Cam-Motion® technology and guide rail with integrated mechanical coordinator and two electro-mechanical hold-open devices for double leaf doors

Required power supply	24 V DC
Max. opening angle for active and inactive leaf	Up to 120°
Certified in compliance with	EN 1155 and EN 1158
Length	Depending on overall door width
Height	30 mm
Depth	26 mm
Hinge distance	1350-2500 mm
CE marking for building products	Yes
Max. door opening angle on active leaf	up to 120°
Suitable for fire doors	Yes
Color	Silver EV1
Net_weight	2,2 kg
<a href="#">Article number</a>	DCG882-----EV1-
<a href="#">EAN-Number</a>	4042203432550

Concealed door closer with Cam-Motion® technology and guide rail with integrated mechanical coordinator and two electro-mechanical hold-open devices for double leaf doors

view construction

Installation dimensions



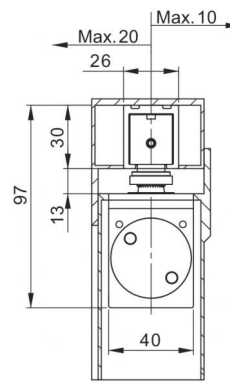
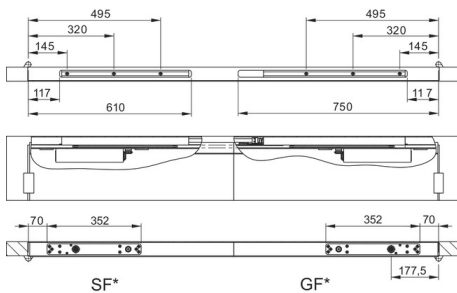
Right handed door shown in diagram

Left handed door is the reverse

SF\* = Passive leaf

GF\* = Active leaf

Installation dimensions with 4 mm axis extension



Right handed door shown in diagram

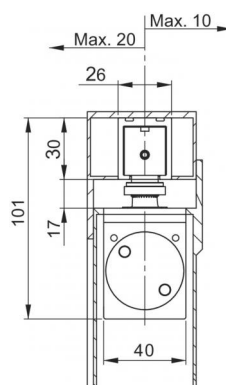
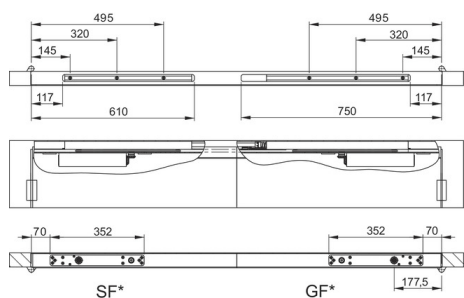
Left handed door is the reverse

SF\* = Passive leaf

GF\* = Active leaf

Concealed door closer with Cam-Motion® technology and guide rail with integrated mechanical coordinator and two electro-mechanical hold-open devices for double leaf doors

### Installation dimensions with 8 mm axis extension



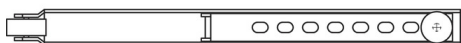
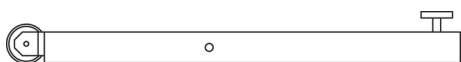
Right handed door shown in diagram

Left handed door is the reverse

SF\* = Passive leaf

GF\* = Active leaf

### Carry bar A101



Enables the correct opening sequence of double doors, installed to inactive door leaf on non-hinge side